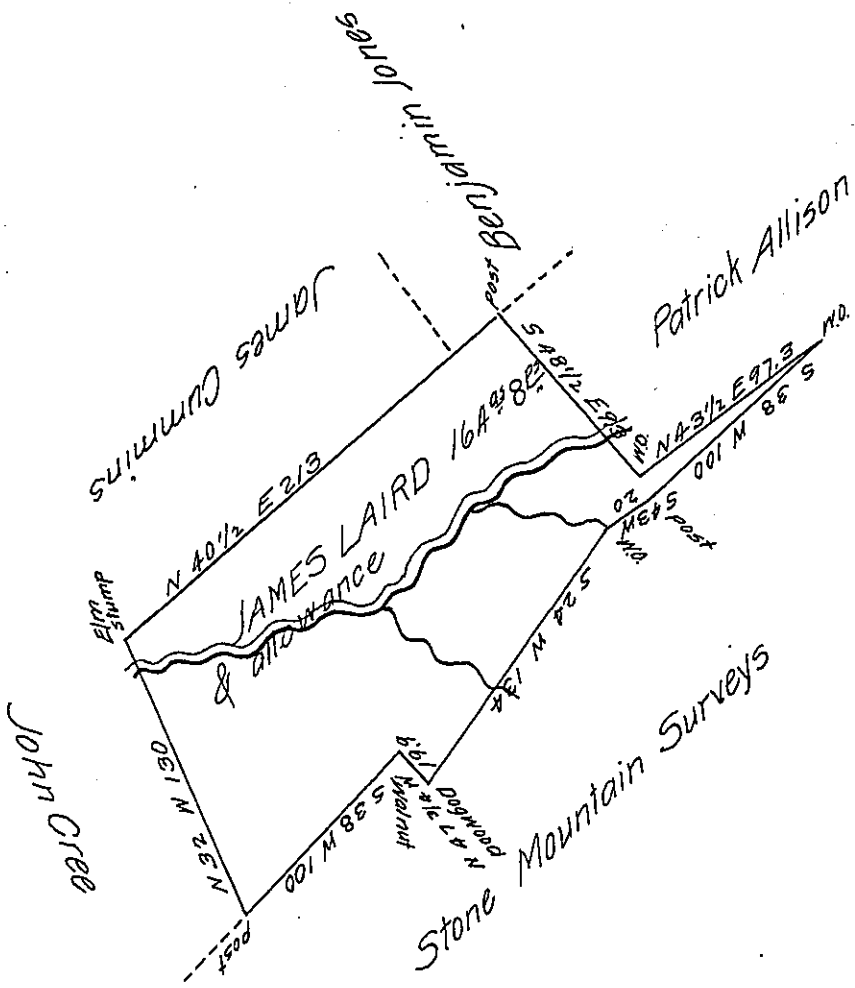


FORM No. 1.



Situate on the East Branch of Stone Creek in Barree township Huntingdon County Contain-  
 ing one hundred & sixty four acres 8 perches and allowance first surveyed August 18<sup>th</sup> 1767  
 & Resurveyed the 18<sup>th</sup> day of August 1815 in Pursuance of an order of Survey to James Laird  
 Dated the 20<sup>th</sup> day of September 1766 N<sup>o</sup>. 1303

Richard T. Leech Esq. }  
 Surveyor General }

Jr<sup>s</sup> Morrison D.S

IN TESTIMONY that the above is a copy of the original remaining on file in  
 the Department of Internal Affairs of Pennsylvania, made  
 conformably to an Act of Assembly approved the 16th day of  
 February 1833, I have hereunto set my hand and caused  
 the Seal of said Department to be affixed at Harrisburg,  
 this eighth day of March 1907

*Geo. D. Brown*  
 Secretary of Internal Affairs.